



FCC Fixed Broadband Deployment Current FCC Service Levels with Crowdsourced Speedtest Data Overlay (Excludes Satellite Service)

 County Boundary

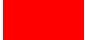
Crowdsourced Speedtest Data

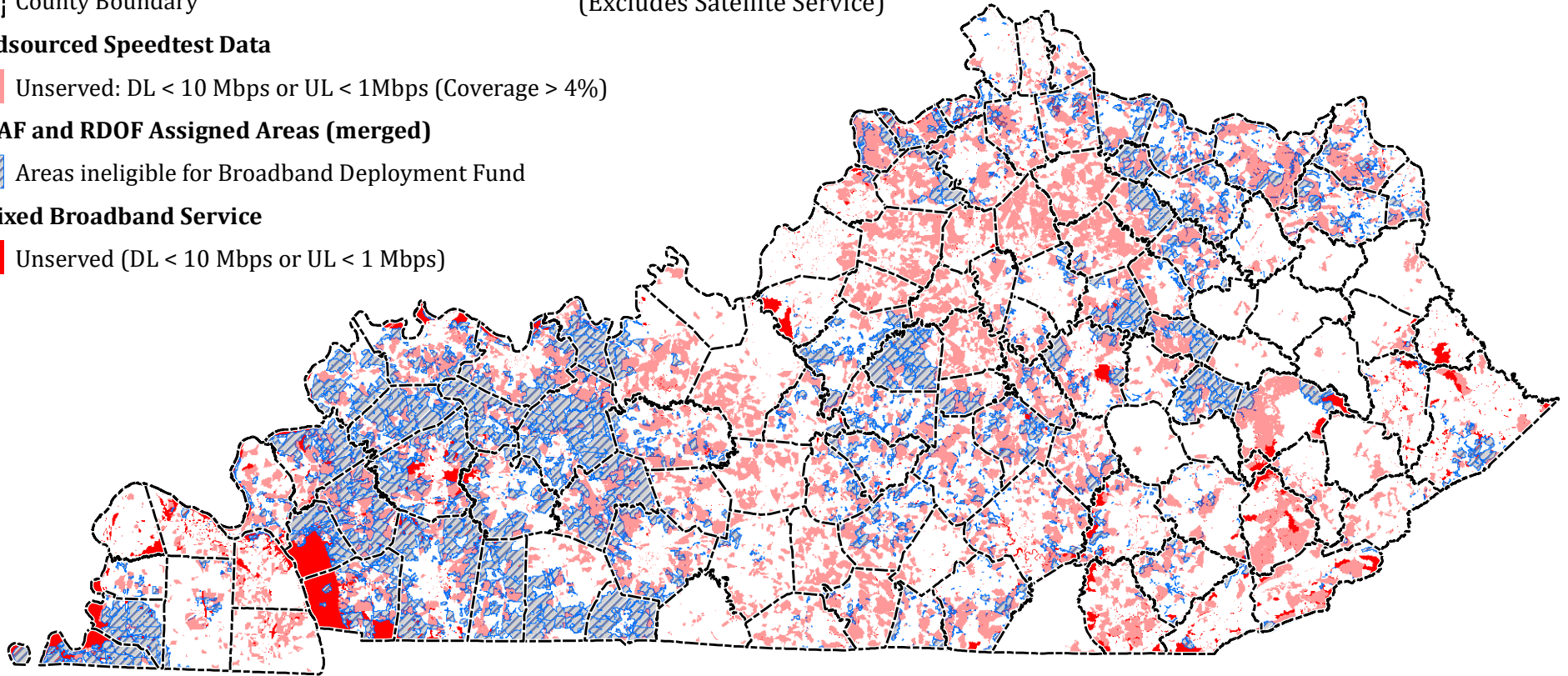
 Unserved: DL < 10 Mbps or UL < 1Mbps (Coverage > 4%)

FCC CAF and RDOF Assigned Areas (merged)

 Areas ineligible for Broadband Deployment Fund

FCC Fixed Broadband Service

 Unserved (DL < 10 Mbps or UL < 1 Mbps)



Data Source Notes:

Crowdsourced Speedtest Data:
Kentucky Broadband Initiative
<https://educationcabinet.ky.gov/Initiatives/Pages/KBI.aspx>
Hosted by Geo Partners, LLC

FCC Fixed Broadband Service:
FCC Form 477 June 30, 2020 Version 1 Released April 9, 2021

Rural Digital Opportunity Fund (RDOF)
Auction 904 Updated Eligible Areas
Published by: FCC - Wireline Competition Bureau
Data as of: December 7, 2020

Connect America Fund Phase II (CAF)
Auction 903 Final Eligible Areas
Published by: FCC - Wireline Competition Bureau
Data as of: October 8, 2020

The complete data package, including this map document and the ArcMap MXD project file can be downloaded using the following link:

https://wris.ky.gov/downloads/broadband/Ky_Broadband_Unserved.zip