

2013 CAPITAL PLAN - PROJECT SUMMARY



Project Title

Sanitary Sewer Rehabilitation Phase IV

Project ID



Project Description

This project provides for the design and rehabilitation of sewers in the area bounded by P&L Railroad to the north, Cedar Street to the east, 5th Avenue to the south, and Main Street to the west. The project includes assessment and rehabilitation of sewers using cured-in-place pipe, rehabilitation of manholes, point repairs, etc. It is the fourth phase of a program to rehabilitate the City's wastewater collection system.

Category

Rehabilitation

Project Year

2013-15

Construction By

Contractor

Opinion of Cost

\$ 438,825

Estimate Class

Planning

Project Justification

Infiltration continues to be a problem resulting in excessive flows to the city's WWTP. As a result, the city is in periodic compliance with the treatment facility's discharge permit.

Comments

Related Projects

Sanitary Sewer Rehabilitation Phases I, II, III and V.

Opinion of Cost

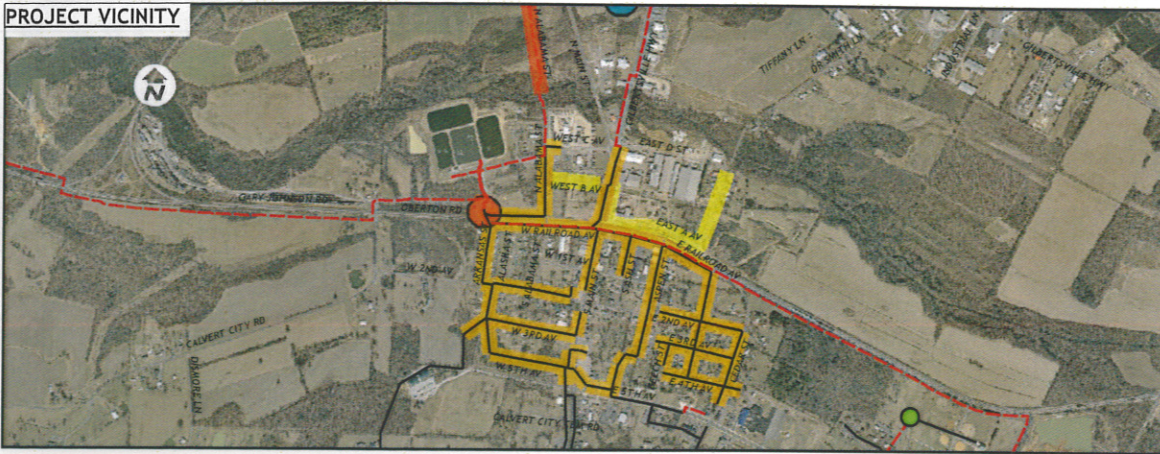
Planning Level Estimate	\$	336,825
Engineering & Contingencies (30%)		102,000
Preliminary Construction Estimate	\$	438,825

Drinking Water State Revolving Fund (DWSRF) Ranking Criteria

Total DWSRF Points: 50

ID	Criteria	Points
A(3)	PROJECT NEEDS - Replacement or Rehabilitation of Aging Infrastructure, including correction of moderate infiltration and inflow (i.e., no associated SSO)	10
F(1)	ASSET MANAGEMENT - System has a Capital Improvement Plan or similar planning document	20
F(2)	ASSET MANAGEMENT - System has developed appropriate rate structures to build, operate, and maintain water works	10
F(3)	ASSET MANAGEMENT - System has specifically allocated funds for the rehabilitation and replacement of aging and deteriorating infrastructure	10

PROJECT VICINITY



Project ID

13-15
03

Project Year

2013-15

Construction By

Contractor

Planning Estimate

\$ 438,825



1" = 300'

WASTEWATER SYSTEM

- Lift Station
- Manhole
- 10" Force Main
- 8" Force Main
- 2"-4" Force Main
- Unknown FM
- 15"-18" Grav. Swr
- 10"-12" Grav. Swr
- 4"-8" Grav. Swr
- Unknown Gravity

WATER SYSTEM

- 24" Water Main
- 20" Water Main
- 18" Water Main
- 16" Water Main
- 12" Water Main
- 10" Water Main
- 8" Water Main
- 6" Water Main
- 4" Water Main
- 2" Water Main

PROJECT CATEGORIES

- Extension
- Rehabilitation
- Replacement
- Treatment

